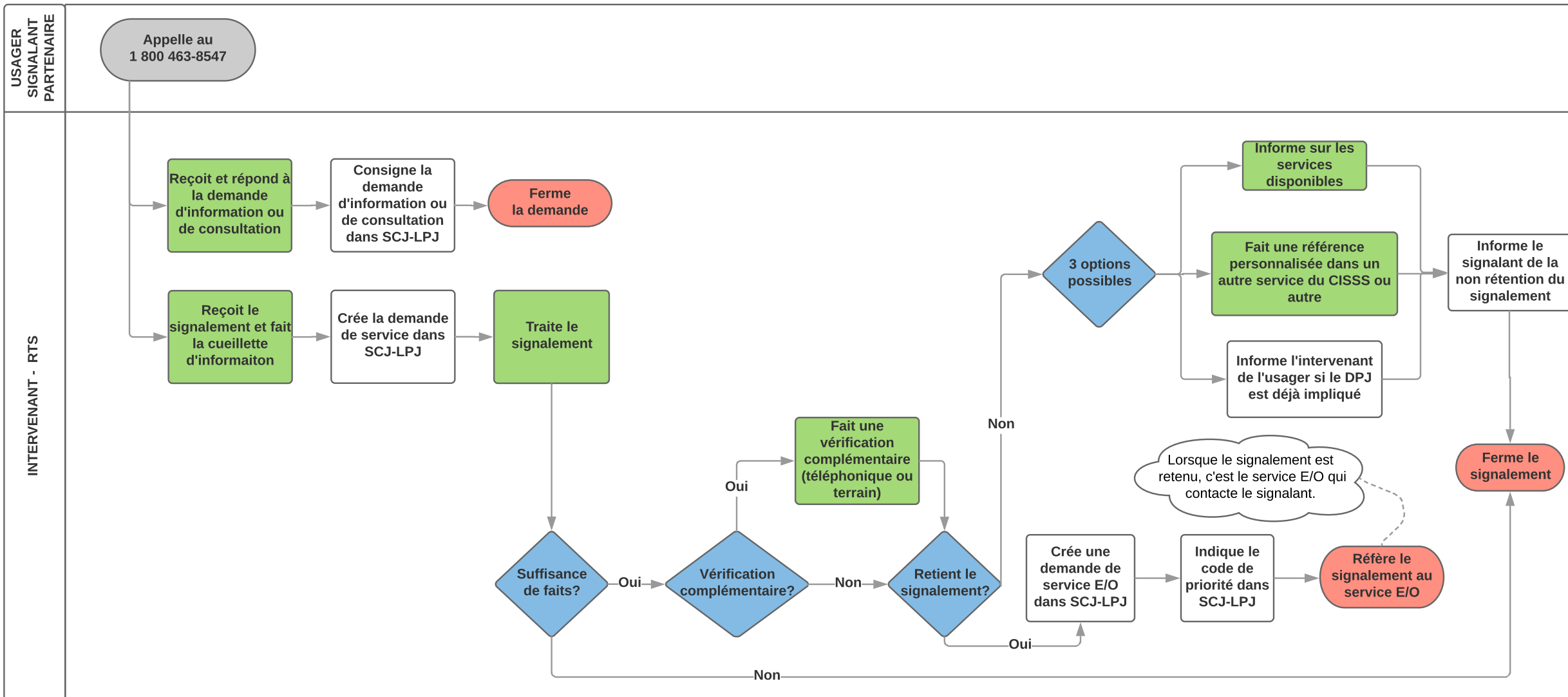


RTS - Jour



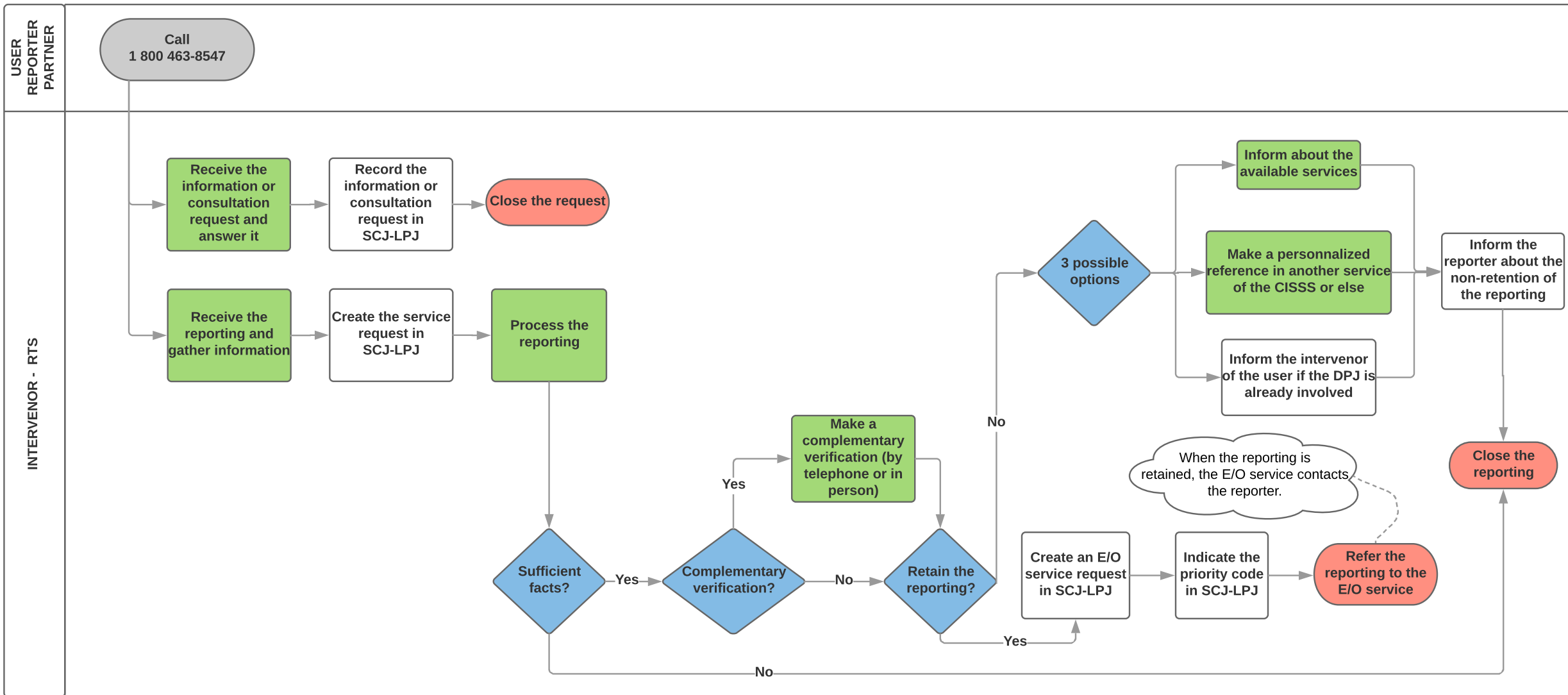
RTS - Soir-Nuit-FDS (Urgences sociales)

Le soir, la nuit et la fin de semaine, l'intervenant de garde complète le formulaire de signalement ou d'information-consultation. Par la suite, il traite la demande si la situation l'exige. Dans tous les cas, il transmet le formulaire de signalement ou d'information-consultation à l'intervenant RTS le lendemain matin.

**L**  
**é**  
**g**  
**e**  
**n**  
**d**  
**e**

- Début (gris) ou fin (rose)
- Décision ou options (bleu)
- Action
- Vert** Utilisé lorsque l'utilisateur est impliqué

RTS - Daytime



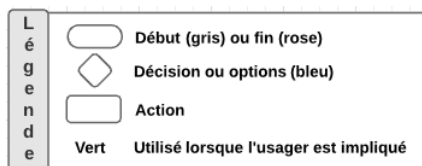
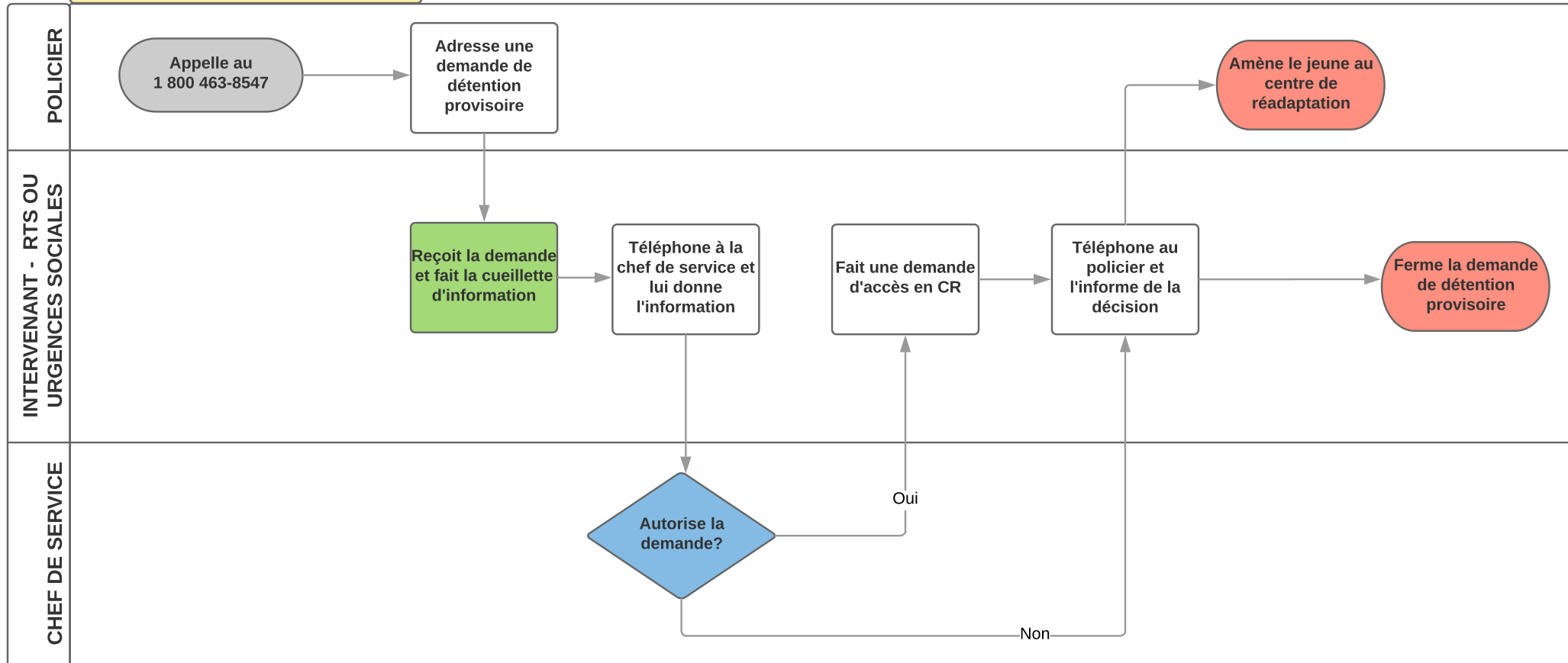
RTS - Evening-Nighttime-Weekend (Social emergencies)

During evenings, nighttime and weekends, the intervenor on duty completes the reporting or information-consultation form. Then, they process the request if required by the situation. In all cases, they transmit the reporting or information-consultation form to the RTS intervenor the next morning.

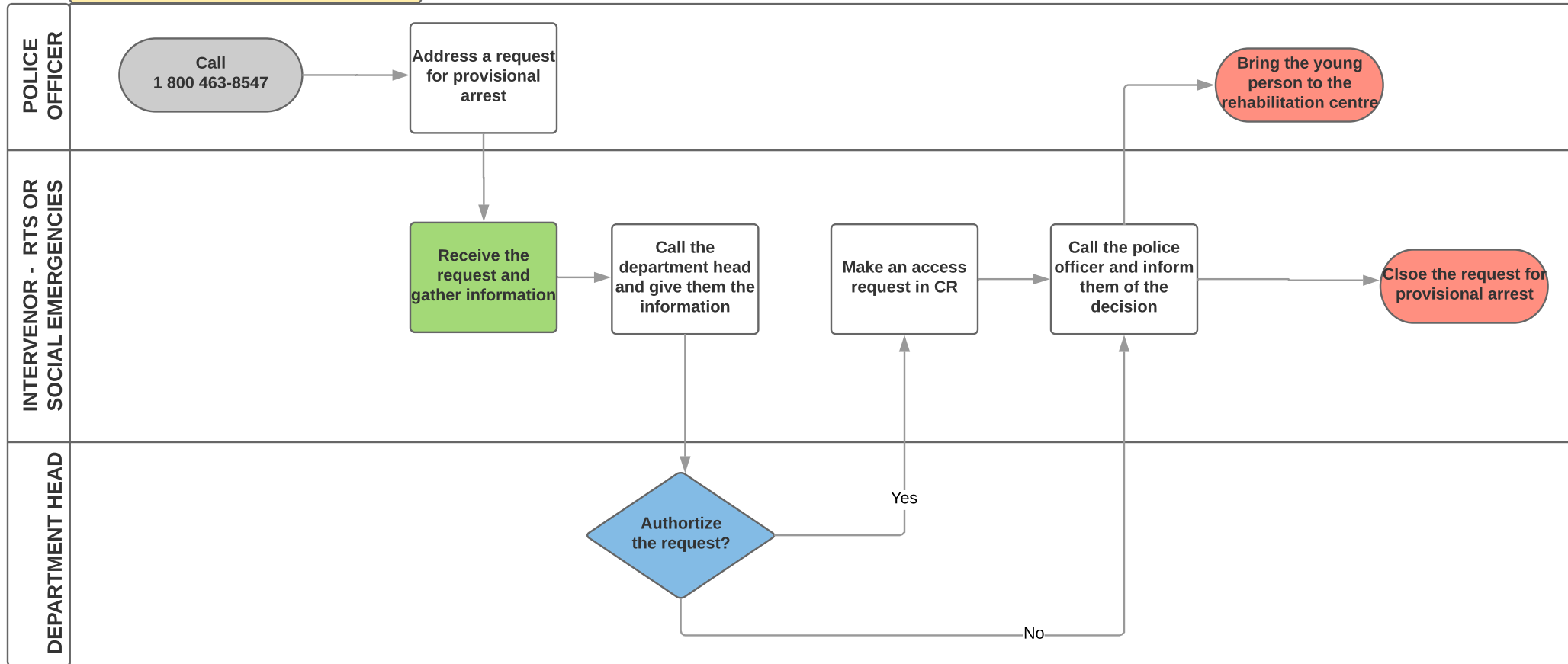
**C A P T I O N**

- Start (grey) or end (pink)
- Decision or options (blue)
- Action
- Green Used when the user is involved

RTS - Urgences sociales 24/7 en LSJPA

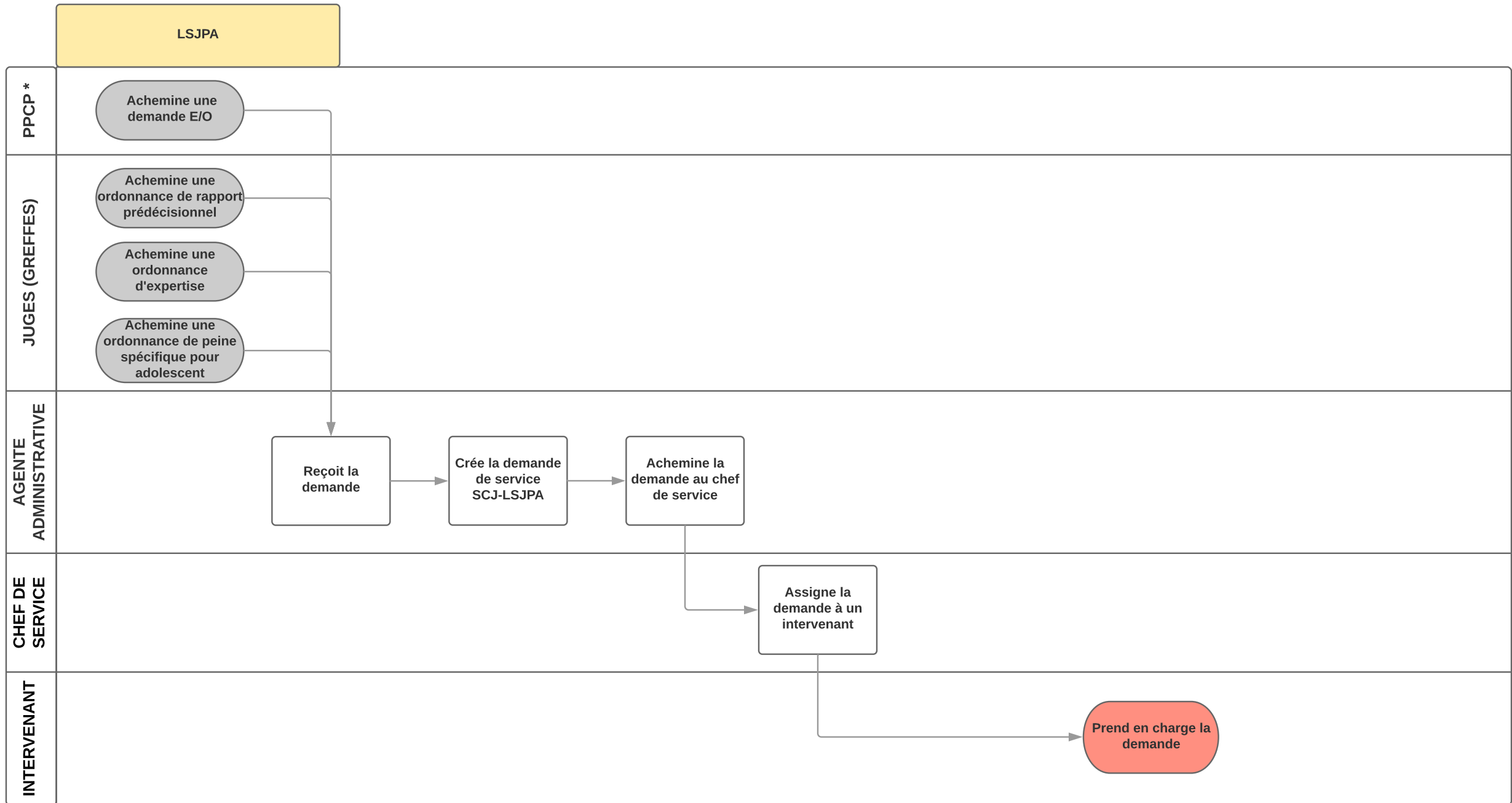


RTS - 24/7 Social emergencies in LSJPA



**C  
A  
P  
T  
I  
O  
N**

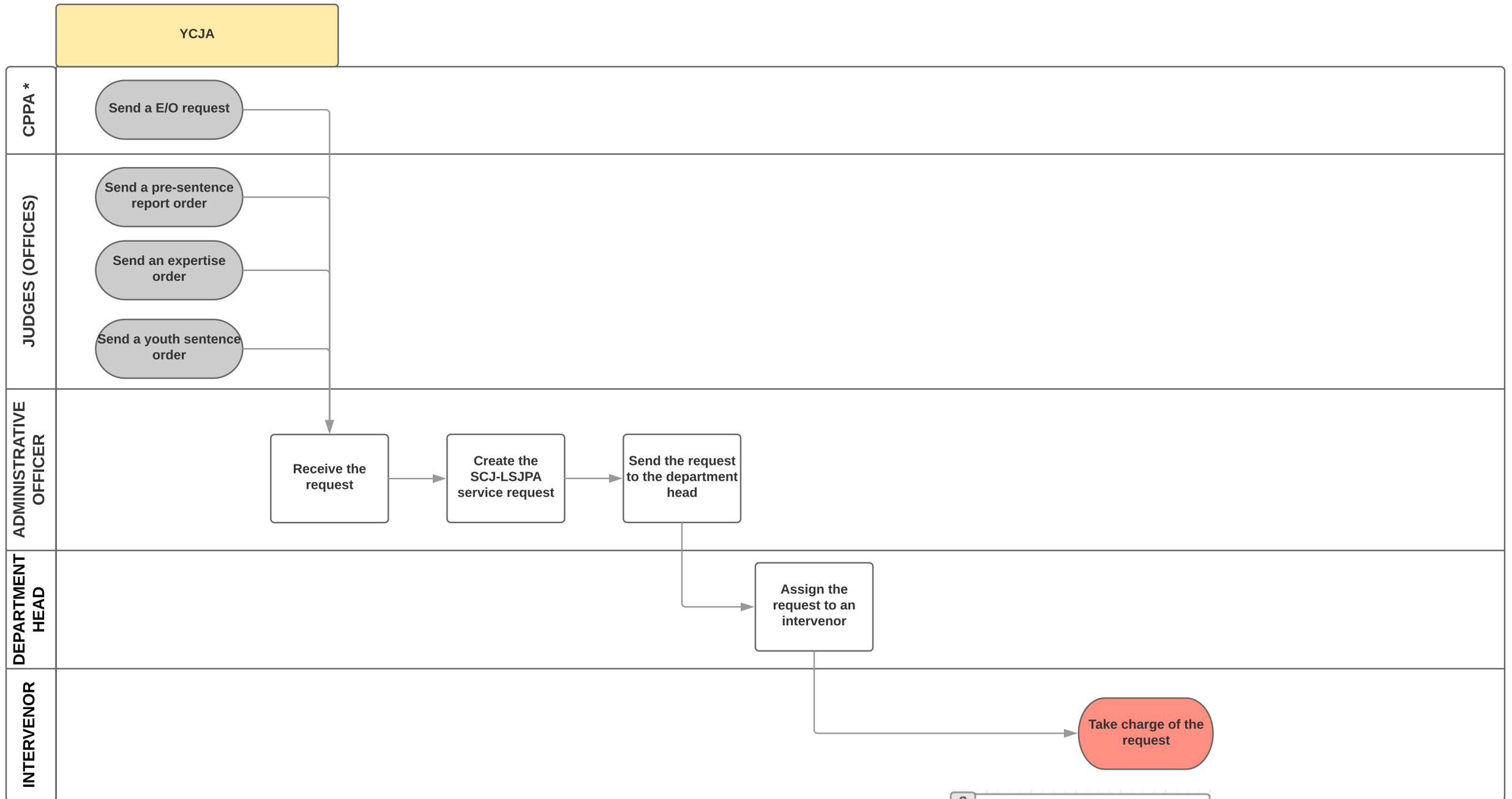
- Start (grey) or end (pink)
- Decision or options (blue)
- Action
- Green Used when the user is involved



\* Procureur aux poursuites criminelles et pénales

**L**  
**é**  
**g**  
**e**  
**n**  
**d**  
**e**

- Début (gris) ou fin (rose)
- ◇ Décision ou options (bleu)
- Action
- Vert Utilisé lorsque l'utilisateur est impliqué

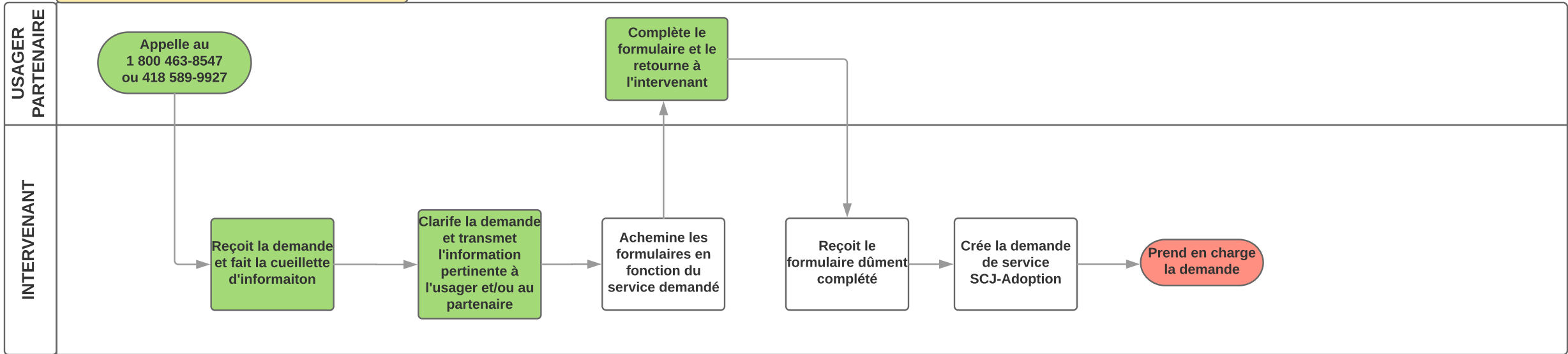


\* Criminal and penal prosecuting attorney

**C A P T I O N**

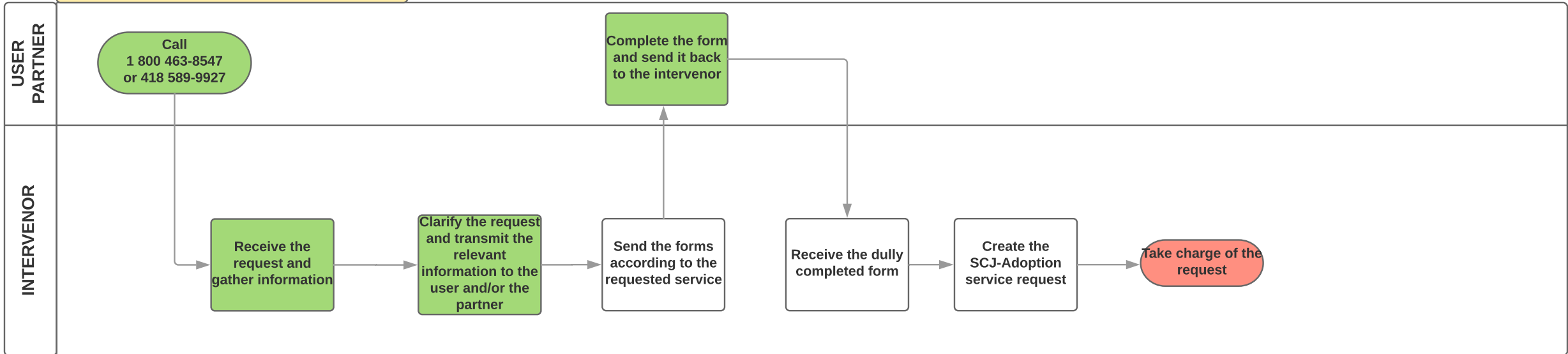
- Start (grey) or end (pink)
- Decision or options (blue)
- Action
- Green Used when the user is involved

Adoption - Recherche d'antécédents et retrouvailles






L é g e n d e		Début (gris) ou fin (rose)
		Décision ou options (bleu)
		Action
	Vert	Utilisé lorsque l'utilisateur est impliqué

Adoption - Background searches and reunion

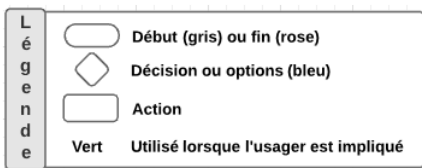
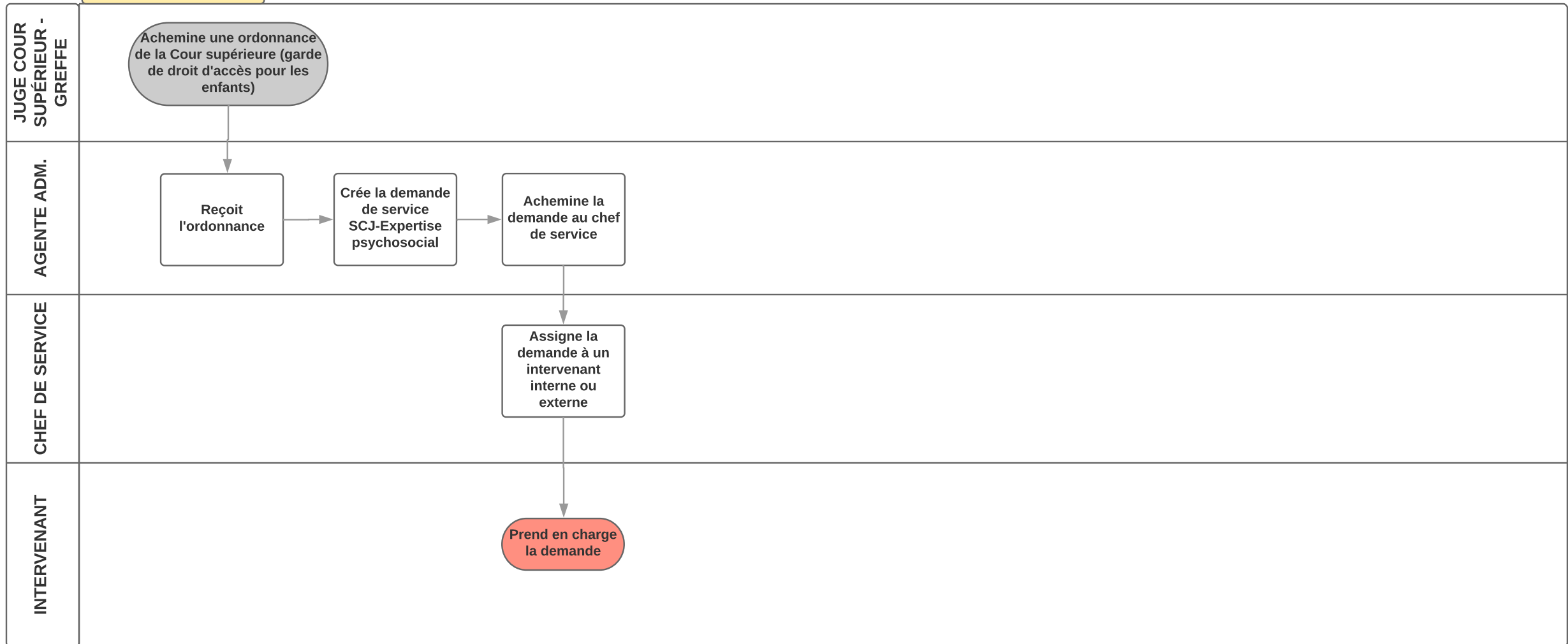


**C  
A  
P  
T  
I  
O  
N**

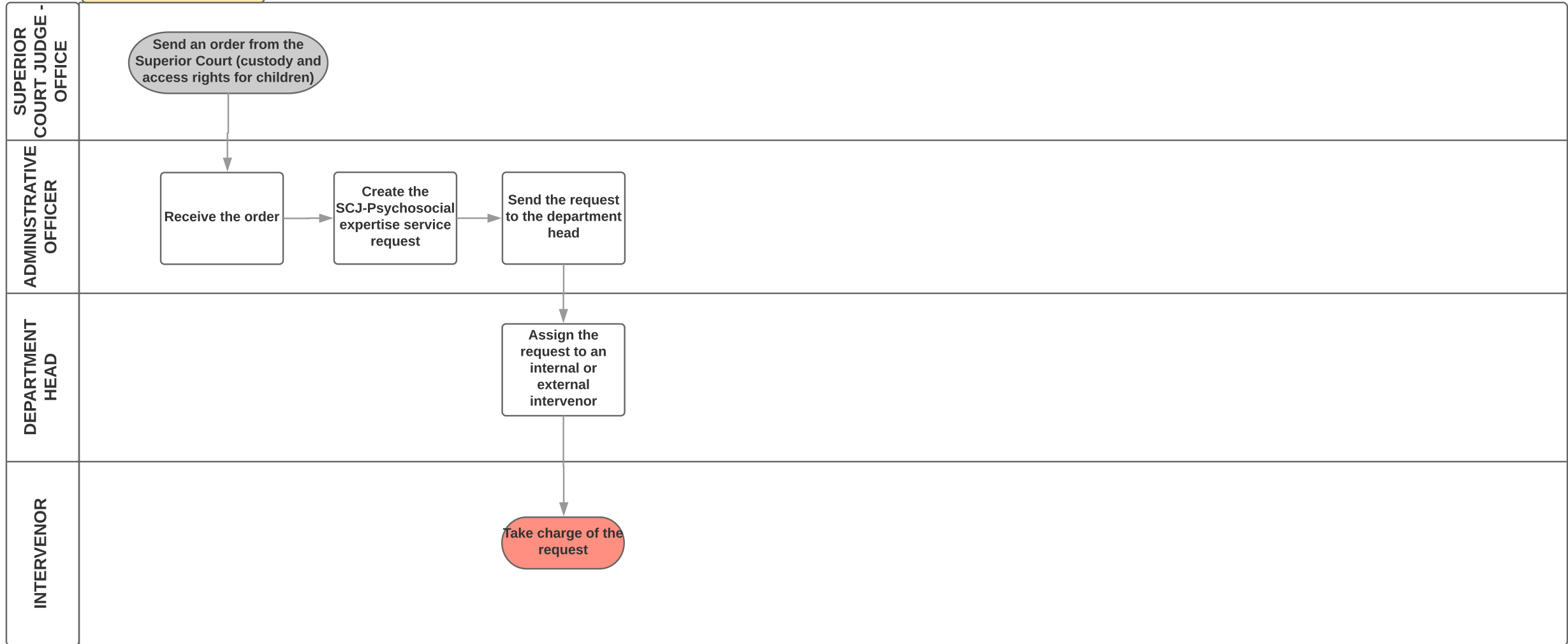
-  Start (grey) or end (pink)
-  Decision or options (blue)
-  Action
- Green** Used when the user is involved



Expertise psychosociale



Psychosocial expertise



**C  
A  
P  
T  
I  
O  
N**

- Start (grey) or end (pink)
- Decision or options (blue)
- Action
- Green Used when the user is involved